

TRMS DATA LOGGER CLAMP METER WITH PC INTERFACE

14 FUNCTION 09 RANGES

Model - KM 135

SPECIAL FEATURES :

- Stylish & Versatile
- AC Clamp-on + Multimeter ranges
- AC True RMS Voltage & Current functions
- Total Harmonic distortion THD%-R
- Data Hold & Auto Hold
- 5400 points Hi-Lo logging
- On screen HI-Lo logging data review capability
- K-type Temperature measurement
- Fast Audible Continuity
- PC interface kit (Optional)

GENERAL SPECIFICATION :

- * **Sensing** : True RMS sensing
- * **Jaw opening size** : 45mm max
- * **Display** : 3-5/6 Digits 6000Counts Backlight Display
Voltage functions : 6000 counts; **Ohms & Hz functions** : 9999 counts;
ACA clamp-on function : 4000 counts
- * **Update Rate** : Voltage, ACA clamp-on, Ohms & Temperature function : 4 per second nominal
 Hz function : 2 Per second nominal
- * **Polarity** : Automatic
- * **Operating Temperature** : 0°C to 40°C
- * **Relative Humidity** : Max. R.H. 80% for temperature upto 31°C decreasing linearly to 50% R.H. at 40°C
- * **Altitude** : Operating below 2000m
- * **Storage Temperature** : -20°C to 60°C, < 80% R.H. (With battery removed)
- * **Temperature Coefficient** : Nominal 0.15 x (specified accuracy) / °C @ (0°C ~ 18°C or 28°C ~ 40°C) or otherwise specified.
- * **Power Supply** : standard 1.5V AAA battery x 2
- * **Power Consumption (typical)** : Voltage & ACA functions : 3.5mA typical
 Ohm & Temperature functions : 4mA typical
- * **Low Battery** : Below approx. 2.4V
- * **APO Consumption** : 10 A typical
- * **APO Timing** : Idle for 16 minutes
- * **Dimension** : L224mm x W78mm x H40mm
- * **Weight** : 224gm approx

SAFETY :

- **Safety** : Meets IEC61010-2-032(1994), EN61010-2(1995), UL3111-2-032(1999).
 Measurement Category : CAT III 600 Volts AC & DC
- **Transient protection** : 6.5kV (1.2/50µs surge)
- **Pollution degree** : 2
- **E.M.C.** : Meets EN61326(1997,1998/A1),EN61000-4-2(1995), and EN61000-4-3(1996)
 In an RF field of 3V/m :
 Total Accuracy = Specified Accuracy + 45 digits;
 Performance above 3V/m is not specified
- **Overload Protection** :
 ACA Clamp-on jaws : AC 1000A rms Continuous
 + & COM terminals (all functions) : 600VDC / VAC rms

ACCESSORIES :

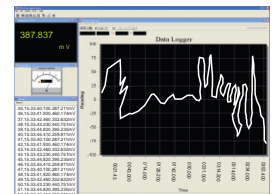
Test Leads pair, User's Manual, Batteries installed, BKP60 banana plug type K-thermocouple & Carrying case.

OPTIONAL ACCESSORIES :

PC interface kit (including BA-1XX optical adaptor back, BC-100R cable, Software CD), BKB32 banana plug to type-K socket plug adaptor



Software CD



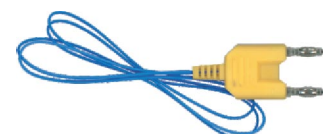
PC Software Screen



BA-1XX Cable

BUA-2303 USB to Serial Adapter

BC-100R USB port Cable



Thermocouple

ELECTRICAL SPECIFICATIONS : KM 135

Accuracy is \pm (% of reading digits + number of digits) or otherwise specified, at 23°C \pm 5°C and less than 75% R. H. ACV & ACA clamp-on accuracies are specified from 5% to 100% of range or otherwise specified. Maximum Crest Factor are as specified below, and with frequency spectrums, besides fundamentals, fall within the meter specified AC bandwidth for non-sinusoidal waveforms. Fundamentals are specified at 50Hz or 60Hz.

AC CURRENT (CLAMP-ON)

Range	Resolution	Accuracy ¹⁾²⁾³⁾
50Hz / 60Hz		
40.00 A	10 mA	$\pm(1.0\%rdg + 5dgts)$
400.0 A	100 mA	
1000 A	1 A	
45Hz ~ 500Hz		
40.00 A	10 mA	$\pm(2.0\%rdg + 5dgts)$
400.0 A	100 mA	
1000 A	1 A	$\pm(2.5\%rdg + 5dgts)$
500Hz ~ 3.1kHz		
40.00 A	10 mA	$\pm(2.0\%rdg + 5dgts)$
400.0 A	100 mA	
1000 A	1 A	$\pm(2.5\%rdg + 5dgts)$

Crest Factor :

< 2.5 : 1 at full scale & < 5.0 : 1 at half scale for 40.00A & 400.0A ranges
< 1.4 : 1 at full scale & < 2.8 : 1 at half scale for 1000A range

¹⁾ Add 8d to specified accuracy while reading is below 10% of range

²⁾ Induced error from adjacent current-carrying conductor : < 0.06A/A

³⁾ Specified accuracy is for measurements made at the jaw center.

When the conductor is not positioned at the jaw center, position errors introduce are :

Add 1% to specified accuracy for measurements made WITHIN jaw marking lines (away from jaw opening)

Add 4% to specified accuracy for measurements made BEYOND jaw making lines (toward jaws opening)

DC VOLTAGE

Range	Resolution	Accuracy
600.0V	100 mV	$\pm(0.5\%rdg + 5dgts)$

NMRR : > 50dB @ 50/60Hz

CMRR : > 120dB @DC, 50/60Hz, RS = 1k

Input Impedance : 2M Ω , 30pF nominal

FREQUENCY

Range	Accuracy
5.00Hz ~ 500.0Hz	$\pm(0.5\%rdg + 4dgts)$

Sensitivity (Sine RMS)

40A range : > 4A

400A range : > 40A

1000A range : > 400A

600V range : > 30V

AUDIBLE CONTINUITY TESTER

Audible threshold	between 10 and 300
Response time	250 μ S typical

AC VOLTAGE

Range	Resolution	Accuracy
50Hz / 60Hz		
600.0 V	0.1 V	$\pm(1.0\%rdg + 5dgts)$
40Hz ~ 500Hz		
600.0 V	0.1 V	$\pm(1.5\%rdg + 5dgts)$
500Hz ~ 3.1kHz		
600.0 V	0.1 V	$\pm(2.5\%rdg + 5dgts)$

CMRR : > 60dB @ DC to 60Hz, Rs = 1K

Input Impedance : 2M Ω , 30pF nominal

Crest Factor : < 2.3 : 1 at full scale & < 4.6 : 1 at half scale

TEMPERATURE

Range	Accuracy ¹⁾²⁾
-50°C ~ 300°C	$\pm(2.0\%rdg + 3°C)$
-58°F ~ 572°F	$\pm(2.0\%rdg + 6°F)$

¹⁾ Type-K thermocouple range & accuracy not included

²⁾ Add 3°C (or 6°F) to specified accuracy @ -20°C-50°C (@ -4°F-58°F)

THD%-R¹⁾

Range	Harmonic Order	Accuracy ²⁾
0.0%~99.9%	Fundamental	1.5% of Reading + 6d
	2nd ~ 3rd	5.0% of Reading + 6d
	4th ~ 10th	2.5% of Reading + 6d
	11th ~ 51st	2.0% of Reading + 6d

¹⁾ THD% -R is defined as : (Total Harmonic RMS / Total RMS) x 100%

²⁾ Specified accuracy @ ACA fundamental > 5A; ACV fundamental > 50V

RESISTANCE

Range	Resolution	Accuracy
999.9	0.1	$\pm(1.0\%rdg + 6dgts)$

Open Circuit Voltage : 0.4VDC typical

All Specifications are subject to change without prior notice

KUSAM-MECO®

An ISO 9001:2008 Company

Authorized Distributor



Signal Hawk Electronics Pvt. Ltd

3rd Floor, M.B.-1, Shakarpur, Delhi-110092, Phones: +91-11-30189528, 27, 26, 25
Web: www.signalhawk.in , E-Mail: info@signalhawk.in