

Amazing detail and color meet  
high-sensitivity GPS performance in

## Waterproof navigation with a splash of color

the GPSMAP 76Cx and 76CSx.

These mariner-friendly handhelds are  
WAAS-enabled, waterproof, and they'll  
even float if dropped overboard.

They're set to go the distance on land  
or sea thanks to a long battery life  
and 128 megabytes of microSD  
card memory for loading optional

MapSource® detail: BlueChart®,  
City Navigator™, TOPO, and more.

The 76CSx adds electronic compass and  
barometric altimeter for extremely  
accurate heading and elevation readings.  
Automatic pressure trend recording even  
lets you can keep an eye on the weather.





## Navigation features

- Waypoints/icons:** 1000 with name and graphic symbol, 10 proximity
- Routes:** 50 reversible routes with up to 250 points each, plus MOB and TracBack® modes
- Tracks:** Automatic track log; 20 saved tracks let you retrace your path in both directions
- Trip computer:** Current speed, average speed, resettable max. speed, trip timer and trip distance
- Alarms:** Anchor drag, approach and arrival, off-course, proximity waypoint, shallow water and deep water
- Tables:** Built-in celestial tables for best times to fish and hunt, sun and moon rise/set based on date and location
- Map datums:** More than 100 plus user datum
- Position format:** Lat/Lon, UTM/UPS, Maidenhead, MGRS, Loran TDs and other grids, including user grid

## GPS performance

- Receiver:** High sensitivity SiRFstarIII™ GPS receiver; WAAS-enabled; Tracks and uses up to 12 satellites to compute and update your position
- Acquisition times\*:**
  - Warm: <1 sec
  - Cold: <38 sec
  - Factory reset: <45 sec
- Update rate:** 1/second, continuous
- GPS accuracy:**
  - Position: <10 meters, typical
  - Velocity: 0.05 meter/sec steady state
- DGPS (WAAS) accuracy:**
  - Position: <5 meters, typical
  - Velocity: .05 meter/sec steady state
- Dynamics:** 4 g's
- Protocol messages:** NMEA 0183 output protocol
- Antenna:** Built-in quad helix receiving antenna, with external antenna connection (MCX)

## Moving map features

- Basemap:** (GPSMAP 76Cx & 76CSx) Built-in routable basemap (North and South America) with cities, highways, interstates, local thoroughfares and secondary roads within metro areas, interstate exit services, airports, rivers, lakes, coastlines and tide stations

## Uploadable maps:

(GPSMAP 76Cx & 76CSx)

Accepts up to 512 megabytes of downloaded map detail from a variety of optional MapSource® media

## Electronic compass feature

(GPSMAP 76CSx only)

- Accuracy:** ±2 degrees with proper calibration (typical); ±5 degrees extreme northern and southern latitudes
- Resolution:** 1 degree

## Barometric altimeter feature

(GPSMAP 76CSx only)

- Accuracy:** 10 feet with proper calibration (user and/or automatic calibration)
- Resolution:** 1 foot
- Range:** -2,000 to 30,000 feet
- Elevation computer:** Current elevation, resettable minimum and maximum elevation, ascent/descent rate, total ascent/descent, average and maximum ascent/descent rate
- Pressure:** Local pressure (mbar/inches HG), 48-hour automatic pressure trend recording

## Power

- Source:** Up to 30 hours (76Cx)  
Up to 20 hours (76CSx)

- Battery life:** Up to 16 hours; 10 hours typical on GPSMAP 76CSx

## Physical

- Size:** 2.7"W x 6.2"H x 1.2"D (6.9 x 15.7 x 3.1 cm)
- Weight:** 7.7 ounces with batteries (not included)
- Display:** 1.6"W x 2.2"H (4.1 x 5.6 cm)  
256-color transfective TFT display (180 x 240 pixels)

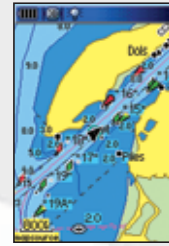
- Case:** Fully gasketed, high impact plastic alloy, waterproof to IEC 60529 IPX7 standards

- Temp. range:** 5°F to 158°F (-15°C to 70°C)
- User data storage:** Indefinite, no memory battery required

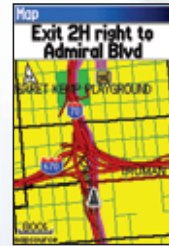
## Accessories

- Standard:** 128 MB microSD card  
PC/USB interface cable  
MapSource Trip & Waypoint Manager CD  
Owner's manual  
Quick reference guide  
Wrist strap

- Optional:** Marine mount  
Carrying case  
12-volt adapter cable  
Power/data cable  
Remote GPS antenna



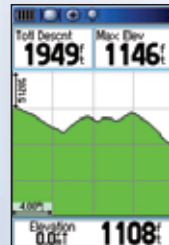
Accepts MapSource® BlueChart® data for detailed offshore cartography



Get detailed street maps plus the location of services with MapSource® City Navigator™.



MapSource TOPO data is ideal for outdoor sports such as hiking or geocaching.



The barometric altimeter feature on the GPSMAP 76CSx provides elevation profiles.

©2006 Garmin Ltd. or its subsidiaries



Garmin International Inc.  
1200 East 151st Street  
Olathe, Kansas 66062, U.S.A.  
913/397.8200 fax 913/397.8282

Garmin (Europe) Ltd.  
Unit 5, The Quadrangle  
Abbey Park Industrial Estate  
Romsey, SO51 9DL, U.K.  
44/1794.519944 fax 44/1794.519222

Garmin Corporation  
No. 68, Jangshu 2nd Rd.  
Shijr, Taipei County, Taiwan  
886/2.2642.9199 fax 886/2.2642.9099

www.garmin.com

Specifications are preliminary and subject to change without notice.

\*On average for a stationary receiver with an open sky view.

GPSMAP 76Cx

GPS 76CSx

